

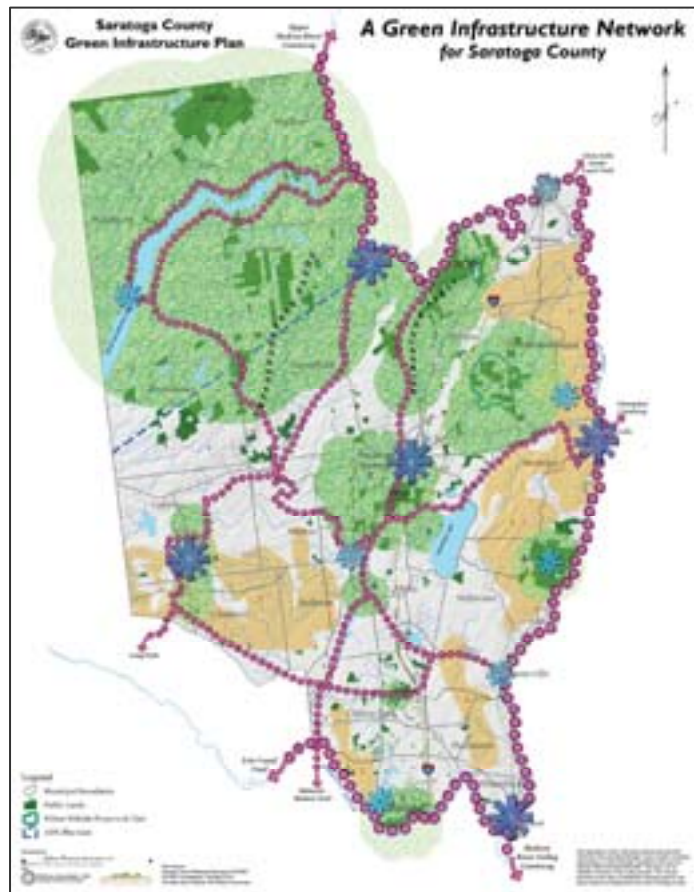
## Saratoga County, NY

# Green Infrastructure Plan for Saratoga County (2006)

Behan Planning Associates, in partnership with American Farmland Trust and Dodson Associates, assisted Saratoga County in developing the first county-wide green infrastructure plan in the state. This regional plan identifies the county's most important resources and details a strategy for their conservation. The plan was created with extensive input from county residents and officials.

Saratoga County's green infrastructure resources are an important component of the regional economy. The green infrastructure plan strengthens this relationship with its focus on the connection between land preservation, recreation, tourism, and economic development.

The plan's vision for Saratoga County's green infrastructure includes a connected system of ecologically-important areas. It includes large blocks of working farmlands such as the one that extends along the Hudson River from Moreau to Stillwater. It also includes concentrated areas of historic and cultural resources, such as the Saratoga National Historic Park and the Village of Ballston Spa. The plan calls for a system of trails, parks and greenways that are linked together by several green infrastructure gateways.



The green infrastructure plan recommends strengthening the partnership between the county and local municipalities and includes a recommendation to expand the scope of the county's open space and farmland protection grant program, among other implementation elements. The plan has been an important catalyst for local communities, many of which have already taken steps to identify how their local resources fit into the regional vision.