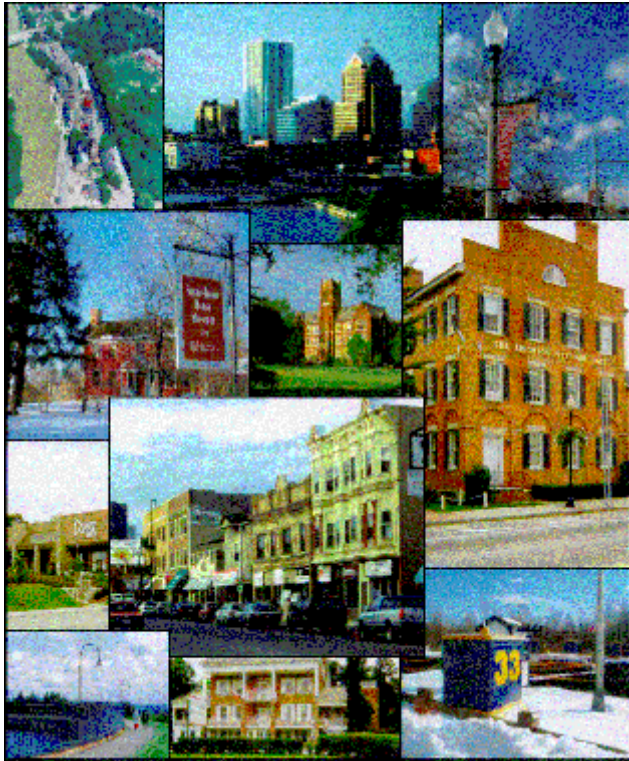
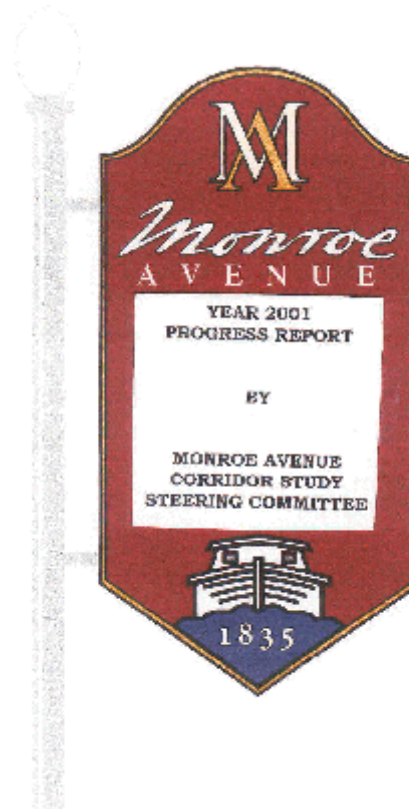


Monroe Avenue Corridor Management



(Courtesy of the City of Rochester Planning Department)



(Design by James Herrmann)

Since 1999, ***Behan Planning Associates, LLC*** representing the Town of Pittsford, has participated in the study and implementation of a multi-jurisdictional corridor management plan and oversight committee. The four communities include: the City of Rochester, the Towns of Brighton and Pittsford and the Village of Pittsford. This successful project has been presented as a state-wide model of inter-municipal cooperation and vision.

The Monroe Avenue Corridor Initiative was awarded a New York State Quality Communities Demonstration Project grant. The grant was crafted by ***Behan Planning Associates, LLC*** on behalf of the four member communities, as they continue to transform Monroe Avenue into “A Main Street Monroe County.”