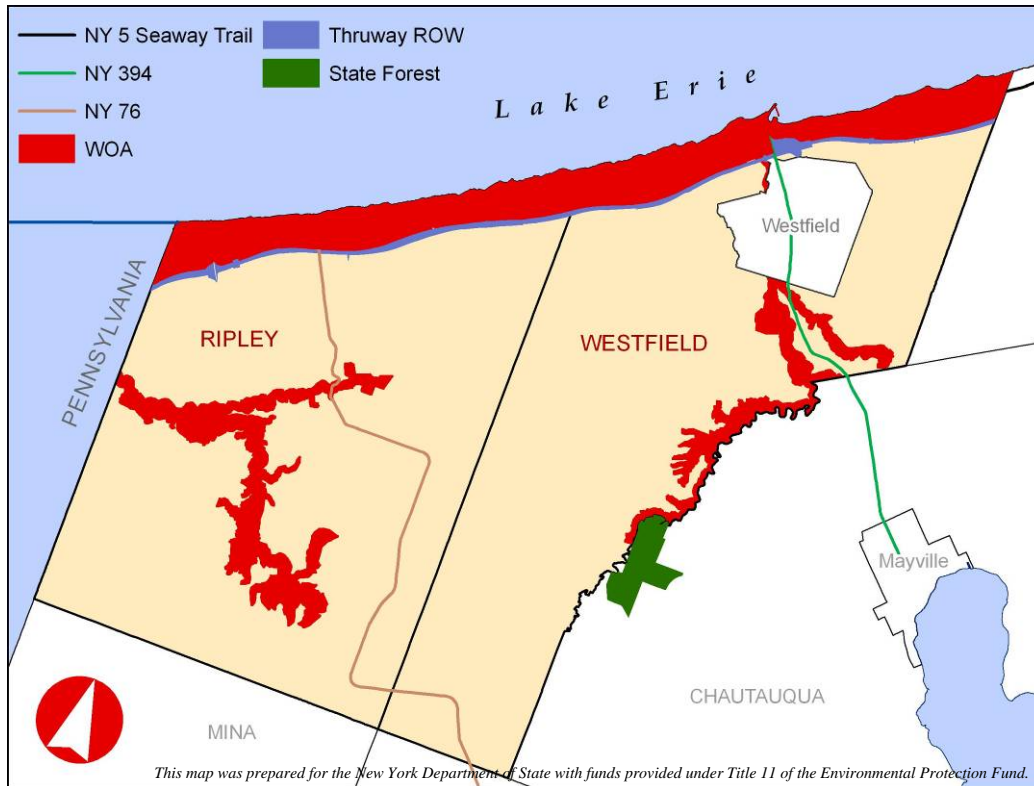


## Westfield Ripley Local Waterfront Opportunity Plan – WOA Narrative



The Waterfront Opportunity Area (WOA) incorporates two major water-related elements in the towns, exclusive of the Village of Westfield:

1. The Lakeshore; and
2. Major Streams (Chautauqua Creek -- Westfield, 20-Mile Creek -- Ripley)

### ***The Lakeshore***

With respect to the lakeshore, the study area incorporates all land between the southern shore of Lake Erie, in the Towns of Ripley and Westfield south to the northern boundary of the New York State Thruway (I-90) right of way. Interstate 90 serves as both a physical and psychological boundary for local residents between the lakeshore and inland areas. Between the Thruway and the lakeshore is NY Route 5, an important corridor which is part of the Seaway Trail, a national byway, and which establishes the character of the lakefront. Many of the land parcels fronting the south side of Route 5 extend to the Thruway with no access other than Route 5. By using the Thruway ROW as a boundary, rather than an arbitrary offset from Route 5, these parcels in their entirety can be included in the boundary area.

### ***Major Streams***

Two major streams that discharge into Lake Erie, Chautauqua Creek in Westfield and Twenty Mile Creek in Ripley, have been included in the opportunity area. Both streams offer unique geological features characterized by deep gorges, large areas of forested land, and dramatic views. Chautauqua Creek is utilized as a source of drinking water. Local residents frequent the gorges to take advantage of recreational opportunities, such as hiking and fishing. Most notably, perhaps, both streams offer

world-class fishing opportunities that draw recreational fishermen from far and wide. Chautauqua Creek is a designated significant habitat in New York State. Large areas of publicly owned land surrounding Chautauqua Creek also suggest opportunities.

The boundary area surrounding the creeks was determined by generating a 10 foot contour layer from the digital terrain model (DTM) used for the County's 2000 photogrammetry; delineating the break in surface at the top of the gorge slopes; and adding a 100 foot buffer from the edge. See illustration below. The boundary for Chautauqua Creek extends south to property owned by New York State that is abutted by the Chautauqua Gorge State Forest to the east in the Town of Chautauqua, at the northern end of the County's Westside Overland Trail. The boundary for the Twenty Mile Creek gorge area in the Town of Ripley consists of two branches. The north branch comprises Belson Creek and Gage Gulf. The east end of this branch ends at the Ripley Town Water District parcels. The extents for the south branch encompass most of steep slopes surrounding Twenty Mile Creek where the walls of the gorge exceed 200 feet in many places.

